

Babylock & Janome Machine Club Oct 2017

Pudda Box

Supplies needed:

Embroidery/sewing machine in good working order
 Power cord and foot control
 Hoop/s – See chart on page 2
 90/14 Top Stitch Needle
 Polyester or Rayon Embroidery threads
 Embroidery bobbin
 Emroidery bobbin to match top thread
 *Floriani's Cut Away Stabilizer – white
 *Floriani's Tear Away Stabilizer - Black
 Odif 505 Temporary Spray Adhesive
 Needle and thread to sew on buttons
 General sewing supplies
 Owner's Manual



www.apjproject.com
 Copyright 2006-2017 by A PJ Project
 All rights reserved

Materials needed:

See chart on page 2 for sizes and yardage
 Felt
 4 buttons – shank buttons work best

Recommended Fabric:

Polyester or wool Felt

PROJECT DESCRIPTION

I saw a box similar to this at Ikea and thought it would make a great embroidery project! The original Ikea box is made with 1 layer of thick felt and snaps, I've modified it to have 2 layers of felt so the back side of the embroidery won't show on the inside and I've done this one with buttons.

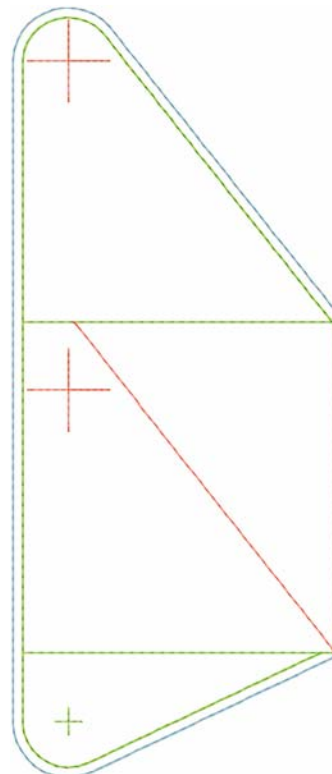
We'll be working with combining designs – there are 4 sizes of boxes and 4 sizes of button holes so you'll be able to choose the box size and the button size.

*The boxes work best with standard cut away stabilizer (not no show mesh), however Montavilla only has this in white. If you are working with dark colors, you'll want to use Black Tear Away stabilizer. The stabilizer will show at the edge. You will need enough stabilizer for 5 hoopings

DESIGN INFO – not to scale



All sizes - Bottom



All sizes - Side



eyelet



Half inch



3 qtr inch



1 inch

FABRIC and HOOP CHART

Please pre cut your parts prior to class

Design	Hoop Size	bottom felt 1 outside 1 lining	Side felt 4 outside 4 lining	Finished size	Yardage needed 72" wide
130 x 180 bottom	100 x 100	3 ½" X 3 ½"	---	3 ½" square	Outside - 1/8 yard Lining - 1/8 yard
130 x 180 side	130 x 180	---	3 ½" x 7 ½"		
160 x 260 bottom	130 x 180	4 ¾" X 4 ¾"	---	4 ½" square	Outside - 1/4 yard Lining - 1/4 yard
160 x 260 side	160 x 260	---	4 ¾" x 10 ½"		
200 x 300 bottom	130 x 180	5 ½" X 5 ½"	---	5" square	Outside - 1/4 yard Lining - 1/4 yard
200 x 300 side	200 x 300	---	5 ½" x 12 ½"		
200 x 360 bottom	200 x 200	6 ½" X 6 ½"	---	6" square	Outside - 1/4 yard Lining - 1/4 yard
200 x 360 side	200 x 360	---	6 ½" x 14 ½"		

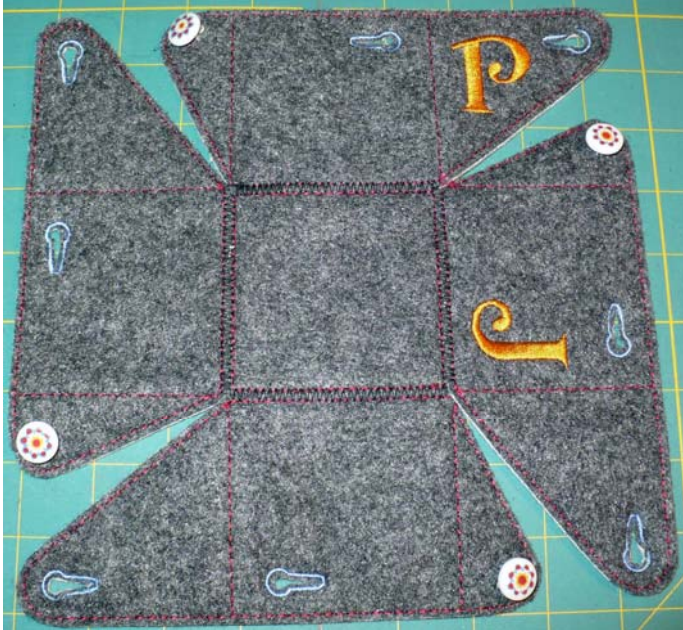
NOTE ABOUT FELT

The felt I used is from Joann – most is their standard Polyester 72" wide @ \$6.99 per yard
The light gray is the Premium Polyester 72" wide @ \$8.99 per yard

PROJECT PICTURES



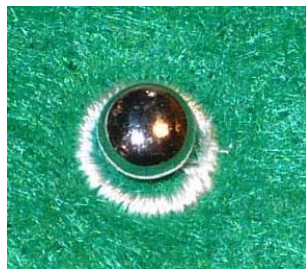
The star buttons do not have a shank – I'll show you how to make a shank on non-shank buttons



Outside



Lining



Sam Brown Studs – if you use these you will also need push punch to make the holes
I got these from Joann Online – here's a link

<http://www.joann.com/silver-creek-button-stud-and-post-silver/13099338.html>

NOTES
